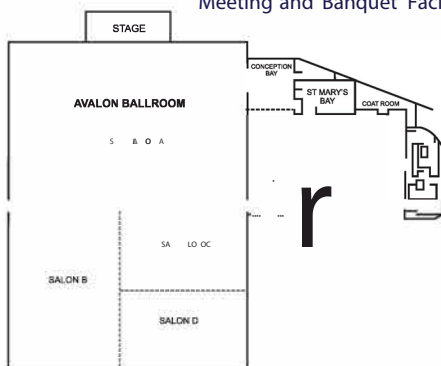


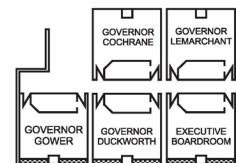
LOCATION	Size Ft.	Sq. Ft.	Theatre	Classroom	Boardroom	U-Shape	Hollow Sq.	Reception	Rounds/10	Height
<b>MAIN FLOOR</b>										
Avalon Ballroom	84 X 140	11,760	1,180	550	—	—	—	1460	770	17'
Salon A	70X84	5,880	560	275	80	80	90	600	330	17'
Salon B	42X 70	2,940	250	150	60	60	60	300	150	11'
Salon C	35X42	1,470	120	80	30	30	30	150	60	11'
Salon D	35X42	1,470	120	80	30	30	30	150	60	17'
Salon B,C,D	70X84	5,880	550	275	80	80	140	600	300	17'
Salon e, D	42X70	2,940	250	150	60	60	60	300	150	17'
Placentia Bay	25X 17	425	36	20	22	20	22	40	30	9' 8"
Bonavista Bay	27X 17	459	36	20	22	20	22	40	30	9' 8"
St. Mary's Bay	16X21	336	32	20	22	20	22	35	30	9' 8"
Conception Bay	26X 23	598	50	36	30	26	30	40	40	9' 8"
Fortune Bay	20X 13	260	—	—	8	—	—	—	—	9' 8"
Trinity Bay	20X 13	260	—	—	8	—	—	—	—	9' 8"
Harbourview Ballroom	78 X 39	3,000	230	180	60	60	80	250	180	13' 3"
Salon E	26X39	1,000	60	60	30	30	30	60	60	13' 3"
Salon F	26X39	1,000	60	60	30	30	30	60	60	13' 3"
Salon G	26X39	1,000	60	60	30	30	30	60	60	13' 3"
Brownsdale Room	26X46	1,100	60	60	30	30	35	60	60	9' 8"
<b>SECOND FLOOR</b>										
Governor Gower	25X25	625	36	21	20	—	—	40	36	8' 3"
Governor Duckworth	25X25	625	36	21	20	—	—	40	36	8' 3"
Governor LeMarchant	25X25	625	36	21	20	—	—	40	36	8' 3"
Governor Cochrane	25X25	625	36	21	20	—	—	40	36	8' 3"
Executive Boardroom	25X25	625	—	—	16	—	—	—	—	8' 3"

\*Numbers are guidelines only. Display table, head table, raised platforms and audiovisual equipment will affect capabilities\*

### Meeting and Banquet Facilities



### Meeting Rooms 2nd Floor



### West Wing Meeting Rooms

